

JUMPING ZOMBIE

INSTALLATION AND OPERATING INSTRUCTIONS

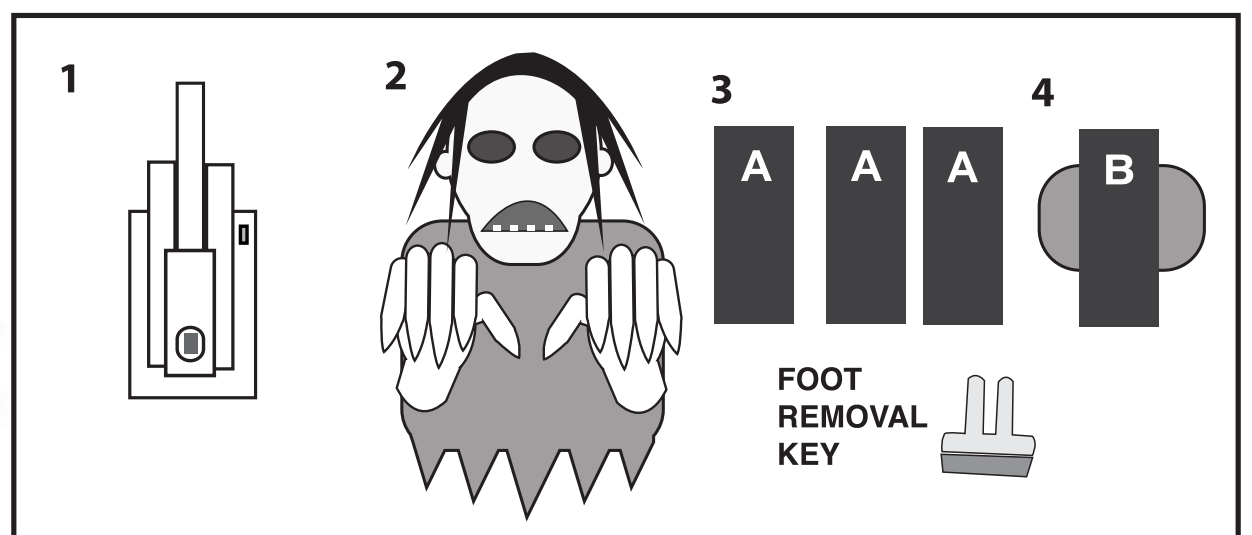
KEEP ALL PLASTIC AND WIRE PARTS AWAY FROM CHILDREN

Setup Instructions: JUMPING ZOMBIE



PARTS:

1. Module
2. Head, Shoulder, Hands & Clothing
3. Front & Side feet (Labeled A, front foot with removal "Key")
4. Back foot with sandbag (Labeled B)



- 1.) Insert front and two side feet into the bottom of the module. (Match A to A)

* Press to make sure feet are FLUSH with rectangular base. To remove FOOT, insert plastic "Key" (included) into holes on bottom to release locks and pull.

- 2.) Insert back foot with sandbag into bottom of the module. (Match B to B)

IMPORTANT!

- 3.) Making sure poles are vertical, attach 2 springs as shown. **USE CAUTION**, spring tension is very strong. Make sure springs are secure on peg when attaching springs to pole.

- 4.) Place Head, Shoulder, Hands & Clothing (Clothing ships wrapped up over head) onto module and snap-lock. Align post underneath Head to slot on Module arm. (Match C to C)

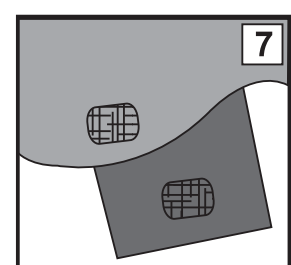
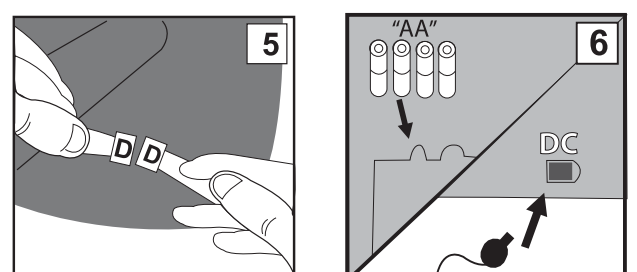
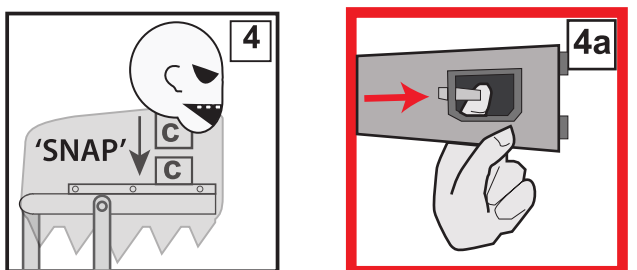
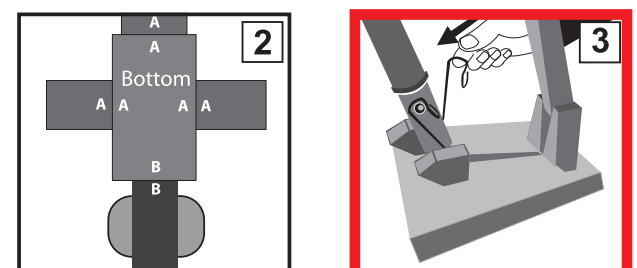
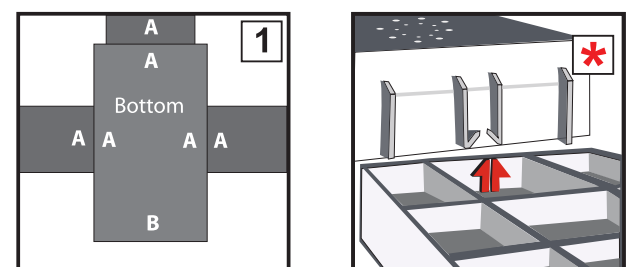
- 4a) Press tab located underneath the arm of the module to properly secure the Head, Shoulder, Hands & Clothing when mounting. Gently pull Head to ensure connection is secure.

- 5.) Connect wire under the clothing into jack fixed on the arm of the module. (Match D to D)

- 6.) Insert 4 AA batteries into the battery compartment located on the bottom module or connect 6V 2A DC adapter (Sold Separately).

- 7.) Pull clothing down to expose Head and Hands, and attach hook and loop fasteners under the clothing to opposite hook and loop fasteners located on all four feet.

Note: Make sure there are no obstructions to hinder Jumping Zombie's movement.
Turn switch to the ON position to operate in Sound or Motion activation mode.
Make a loud sound (clap) or move in front of the item to activate.
Leave switch in OFF position when not in use.



JUMPING ZOMBIE

Optional Footpad Setup

Follow Steps 1 through 6 on initial installation first.

1. Connect wire from the optional footpad to the jack labeled FOOTPAD located on the base.
2. Place the switch on the base into the 'FOOTPAD' position to enable FOOTPAD activation.
3. Step on FOOTPAD to activate the scary sequence. (go to step #7 to continue setup)

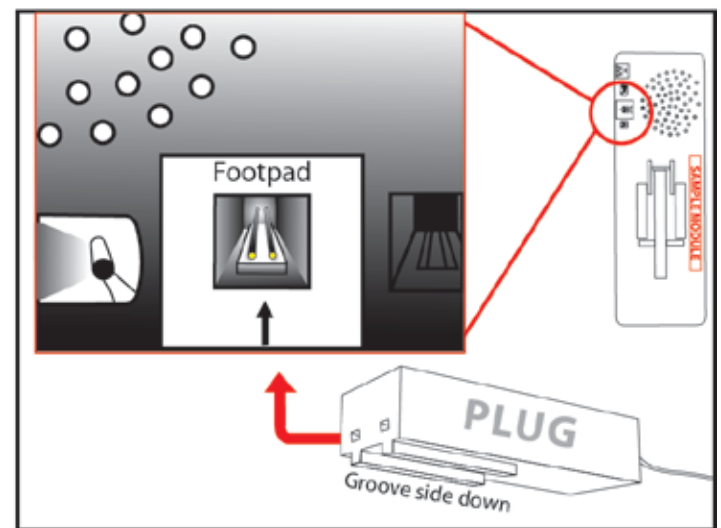
NOTE:

When plugging in, make sure pins line up properly with holes on plug.
Align plug, groove side down, with the notch.

CAUTION!

Not aligning the plug to jack properly may cause permanent damage to footpad jack of your item. **DO NOT** use excessive force when inserting plug.

*Footpads are sold separately and can be purchased in Spirit Halloween stores or online at: www.spirithalloween.com



If you hear a constant "clicking" sound and this item does not function properly, it means that there is an obstruction preventing the item from operating (for example: rock, bush, incline, etc.) The clicking sound does not mean that it is broken, just remove any obstruction and the item should function normally.

SMART PHONE SCAN SETUP VIDEO



****No weight should be placed onto item****

****For indoor use only****

Warning! This item is not a toy. For decoration only. Small parts, choking hazard.

This product is intended for use by persons 15 years of age and older.

Not intended for use by children ages 14 years and younger.

WARNING

DO NOT TURN THIS ITEM ON UNTIL YOU HAVE COMPLETELY FINISHED ASSEMBLY.

Stay clear of item while operating.



DO NOT RETURN THIS ITEM TO THE STORE!

If experiencing technical difficulties, please go to www.tekkytoys.com for assistance.



Surface Washable Only.

ALL NEW MATERIALS : PLASTIC, POLYESTER, POLYESTER FIBER

Battery Powered:

Requires 4 AA Batteries

Optional DC Adapter Ready (6V 2A)

**DC Adapter and footpad sold separately and can be purchased at: www.spirithalloween.com

Jumping Zombie is a trademark of Tekky Toys.

PATENT PENDING (13/352,490)

Copyright © 2012 Tekky Toys.

All Rights Reserved.

MADE IN CHINA

